



MOVING FORWARD TOGETHER 2050

**Public Meetings
2024**



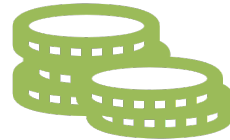
What is a Metropolitan Planning Organization (MPO)?



Federally
Mandated



Facilitation of
Collaboration



Allocate
Funding
Resources
through the
"3-C Process"



Transportation
Planning to
Address Regional
Needs and
Priorities



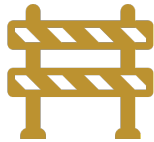
What are the MPOs' planning documents?



**Metropolitan
Transportation Plan (MTP)**



**Transportation
Improvement Program
(TIP)**



**Congestion Management
Process (CMP)**



**Public Participation Plan
(PP)/Title VI Plans**



Bicycle & Pedestrian Plan

**A Unified Planning
Work Program (UPWP)
is used to guide
development/update of
the plans.**

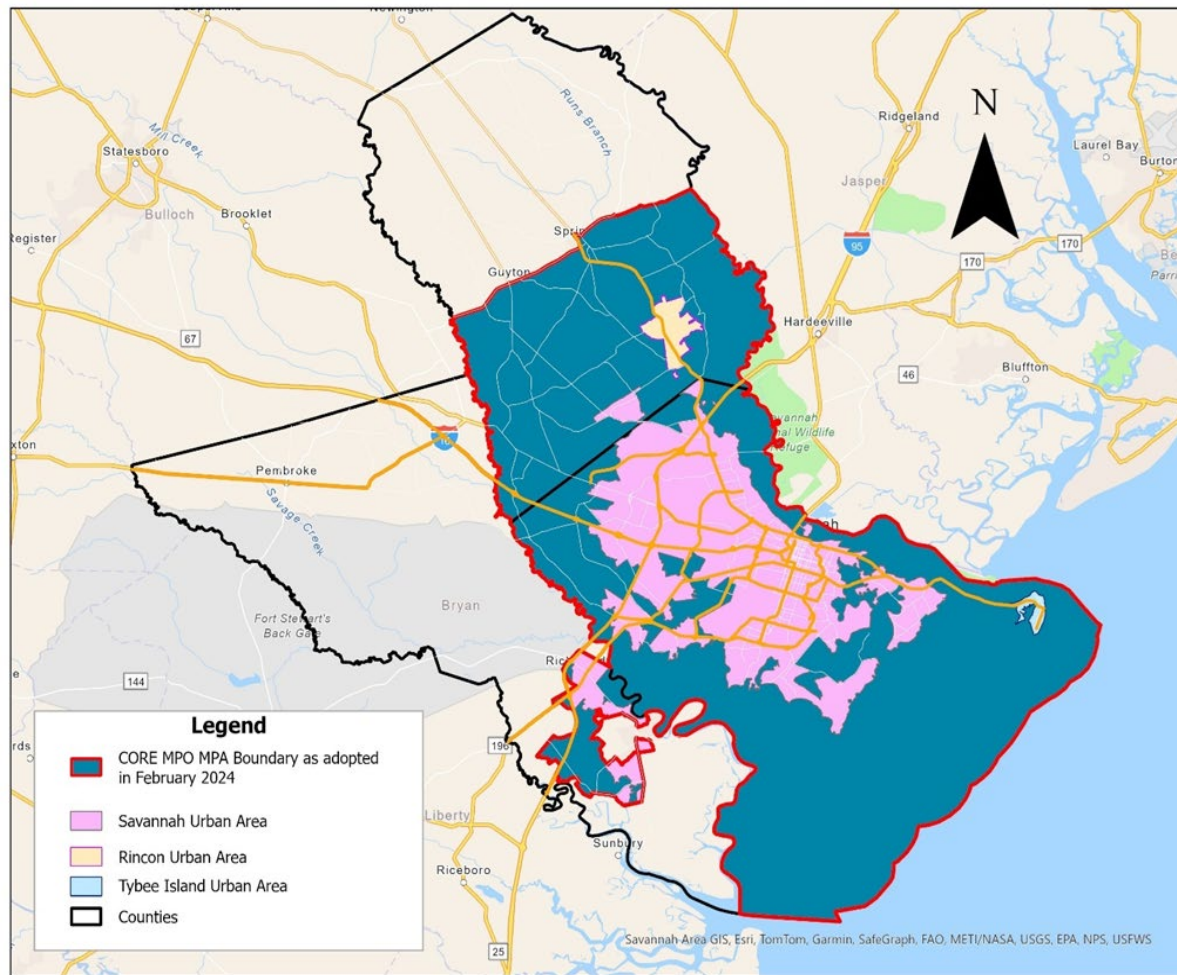


What is CORE MPO ?

MPO for the
Savannah region.

The CORE MPO
Metropolitan
Planning Area (MPA)
boundary includes
all of Chatham
County and parts of
Bryan and Effingham
Counties.

The MPA boundary
was adopted by the
CORE MPO Board in
February 2024 and
approved by the
Governor of Georgia.



Who is CORE MPO ?

The CORE MPO Board

- Sets regional and long-term transportation policies.
- Prioritizes projects.
- Approves the long-range Metropolitan Transportation Plan, short-range Transportation Improvement Program, and other required planning documents.

CORE MPO Board

Voting Seats

- Chatham County Commission (3)
- Effingham County Commission (1)
- Bryan County Commission (1)
- City of Savannah (3)
- City of Bloomingdale (1)
- City of Garden City (1)
- City of Port Wentworth (1)
- City of Pooler (1)
- City of Richmond Hill (1)
- City of Tybee Island (1)
- Town of Thunderbolt (1)
- Town of Vernonburg (1)
- Effingham County Municipality Rotating Seat (1)
- Georgia Department of Transportation (1)
- Chatham Area Transit Authority (1)
- Savannah Airport Commission (1)
- Georgia Ports Authority (1)
- Metropolitan Planning Commission (1)
- CORE MPO Economic Development and Freight Advisory Committee (1)



What is the Metropolitan Transportation Plan (MTP)?



The region's transportation system investment policies and priorities



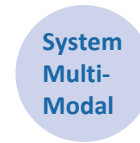
Projections for the region's needs in the next 20+ years (updated every 5 years)



Links with regional land use, development, housing & employment goals & plans



Aligns with the Statewide Transportation Plan



Focused on systems level & intermodal/multi modal in nature



Emphasizes efficient use of existing system & its preservation



Fiscally constrained prioritized listing of projects



Moving Forward Together 2050

Blueprint for Savannah region's transportation improvements to meet mobility needs

Covers 2025 through 2050

Expected adoption: August 7, 2024

Multimodal

Highway Improvements

Travel Demand Model

Congestion Management Process

Sub-area Studies (US 80, SR 307, SR 21, Effingham Plan, etc.)

Freight

CORE MPO Regional Freight Transportation Plan update

GDOT Coastal Empire Study

Transit

Master Transit Plan

Transit Development Plan

Bike/Ped/Trail Improvements

Non-Motorized Transportation Plan Update

Thoroughfare Plan Update

Environmental Consideration

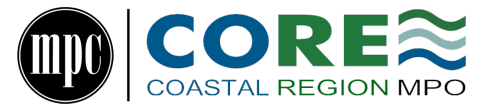
Urban Flooding Model Study

Resiliency/Sustainability Analysis





Public & Stakeholder Involvement



Development Process



Three Rounds of Public Involvement

1st Round in Fall 2022

- Kick-Off
- Surveys
- Refine Goals and Objectives

2nd Round in 2023

- Updates
- Study and Analysis Findings

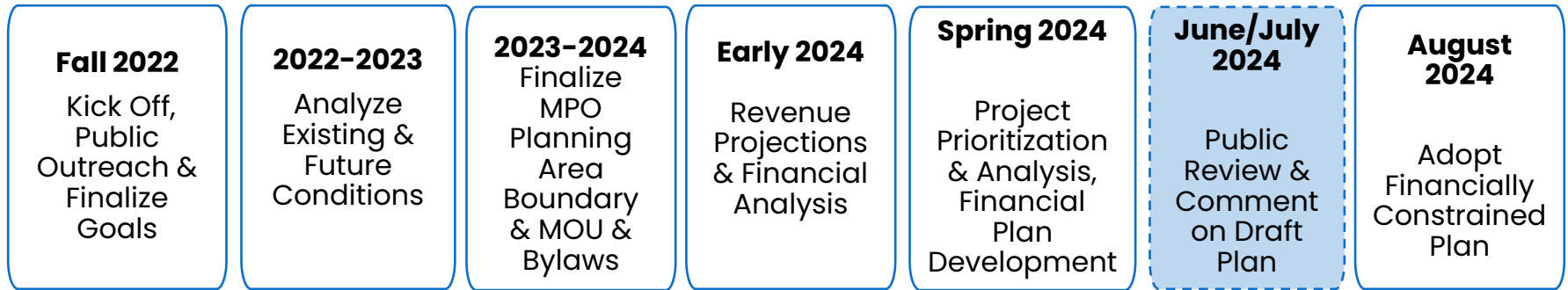
3rd Round in Summer 2024

- Financially Constrained Project Lists



Public Involvement Process

We Are
HERE!



Development Schedule

2050 MTP Highway Revenue Projections by Cost Band and Category

Year	Cost Band	Cost Band Total	Project Revenues					Maintenance Revenues	
		Projects + Maintenance	Specific Highway Projects	Operational Improvements Projects Set Aside	Non-Motorized Projects Set Aside (\$1.36 Million Per Year)	Transit Projects Set Aside	Total for Projects	Total for Maintenance	Non-Motorized Projects Set Aside (3% of Project Revenue)
2025 - 2032	One	\$601,499,559	\$459,183,390	\$65,517,735	\$10,880,000	\$10,400,000	\$545,981,125	\$55,518,434	\$16,379,434
2033 - 2041	Two	\$587,367,437	\$461,221,186	\$66,158,344	\$12,240,000	\$11,700,000	\$551,319,529	\$36,047,908	\$16,539,586
2042 - 2050	Three	\$701,958,459	\$555,872,528	\$79,065,345	\$12,240,000	\$11,700,000	\$658,877,872	\$43,080,587	\$19,766,336
Total		\$1,890,825,456	\$1,476,277,104	\$210,741,423	\$35,360,000	\$33,800,000	\$1,756,178,527	\$134,646,929	\$52,685,356

Operational Improvements Set Aside = 12% of total available revenues for projects (approximate lump sum percentage).

Transit Set Aside assumes \$1,000,000 each year for bus purchase or transit improvements.

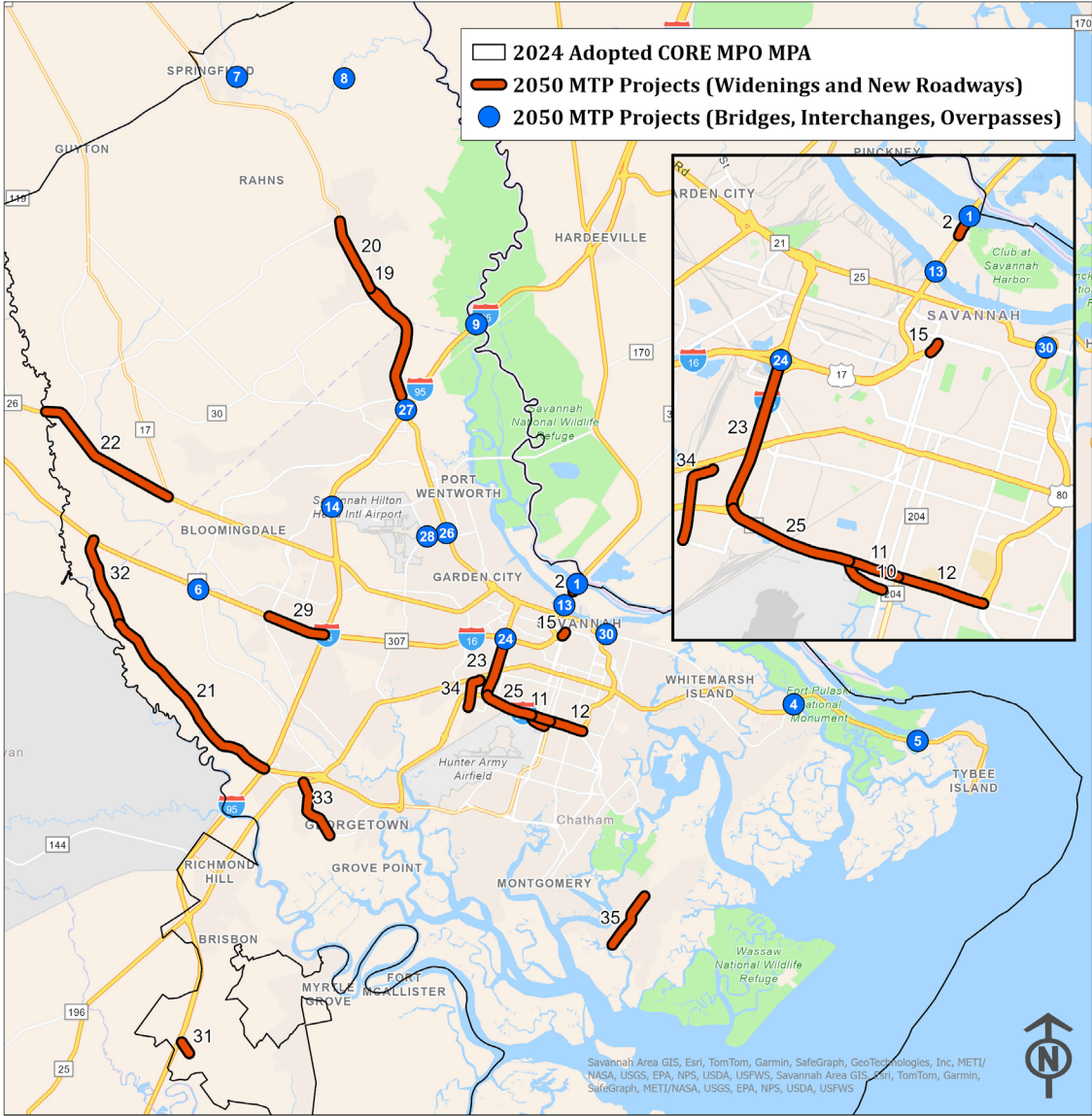
Non-Motorized Set Aside assumes \$1.36 million each year for bike/ped projects (roughly the Z301 funds for each year).

Available revenues for specific highway projects are total project revenue minus set asides.



Draft Highway Revenues

Draft - 2050 Metropolitan Transportation Plan Cost Feasible Projects



Pipeline Projects

1. SR 404 Spur/US 17 @ Back River
2. SR 404 Spur/US 17 FM NE of Savannah Harbor Pkwy to Back River
3. I-95 FM Florida State Line to South Carolina State Line -ITS EXP *
4. SR 26/US 80 @ Bull River
5. SR 26/US 80 @ Lazaretto Creek
6. I-16 @ SR 17 (Little Neck Road)
7. Stillwell Rd @ Ebenezer Creek
8. CR 307/Long Bridge Rd @ Ebenezer Creek 4 mi E of Springfield
9. I-95 @ Savannah River @ South Carolina Line
10. I-516 @ CS/1503/DeRenne Avenue (DeRenne Blvd. Option)
11. SR 21 from CS 346/Mildred Street to SR 204 (West DeRenne Avenue Improvements)
12. East DeRenne from SR 204 to Harry S Truman Parkway (East DeRenne Avenue Improvements)
13. SR 404 Spur/US 17 @ Savannah River Crossing
14. I-95 at Airways Avenue
15. I-16 Exit Ramp Removal
16. Volterra Electrification of American Ports (VEAP) *
17. Port of Savannah Renewable Fuel Project *
18. I-16 From W Gwinnett St to Chatham Pkwy – NEVI Charging Station *
33. Chevis Road Improvements
34. Garrard Avenue Improvements
35. Green Island Road Multipurpose Path off Diamond Causeway

Longer Term Projects

19. SR 21 Widening
20. SR 21 Widening
21. State Route 204 Widening 2 to 4 Lanes
22. US 80 Widening
23. I-516 / Lynes Parkway Widening from I-16 to Veterans Pkwy
24. I-516 / Lynes Parkway at I-16 Interchange Reconstruction
25. I-516 / Lynes Parkway Widening from Veterans Pkwy to Mildred St
26. SR 307 Grade Rail Separation and Operational Improvements
27. I-95 Interchange Reconstruction
28. SR 307 Grade Separation
29. I-16 Widening
30. President Street Grade Separation
31. Belfast Keller Road Widening
32. Old River Road Widening

*Projects not mapped

Pipeline Projects – Chatham County & Municipalities

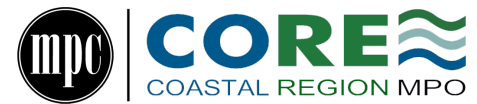
1. PI# 0008358, I-516 @ CS / 1503 / DeRenne Avenue (DeRenne Blvd Option)
2. PI# 0008359, EAST DERENNE FROM SR 204 TO HARRY S TRUMAN PKWY (East DeRenne Avenue Improvements)
3. PI# 0010236, SR 21 FROM CS 346/MILDRED STREET TO SR 204 (West DeRenne Avenue Improvements)
4. PI# 0015704, SR 404 SPUR/US 17 @ BACK RIVER
5. PI# 0015705, SR 404 SPUR/US 17 FM NE OF SAVANNAH HARBOR PKWY TO BACK RIVER
6. PI# 0017183, SR 404 SPUR/US 17 @ SAVANNAH RIVER CROSSING (ROW phase only)
7. PI# 0017411, I-95 FM FLORIDA STATE LINE TO S CAROLINA STATE LINE-ITS EXP
8. PI# 0017414, SR 26/US 80 @ BULL RIVER
9. PI# 0017415, SR 26/US 80 @ LAZARETTO CREEK
10. PI# 0017515, I-16 @ SR 17 (I-16 Interchange at Little Neck Road)
11. PI# 0018402, I-95 at Airways Avenue



Draft Highway Projects

Pipeline Projects – Effingham County

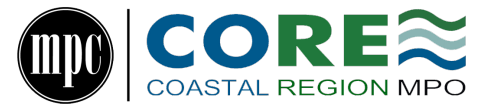
1. PI# 0018234, STILLWELL ROAD @ EBENEZER CREEK
2. PI# 0019186, CR 307/LONG BRIDGE RD @ EBENEZER CREEK 4 MI E OF SPRINGFIELD
3. PI# 511250, I-95 @ SAVANNAH RIVER @ SOUTH CAROLINA LINE



Draft Highway Projects

Projects with Grant Awards

1. PI# 0011744, I-16 Exit Ramp Removal - Reconnecting Communities and Neighborhoods Program grant award, for PE phase only.
2. Voltera Electrification of American Ports (VEAP) - Reduction of Truck Emissions at Port Facilities Grant Program project award.
3. Port of Savannah Renewable Fuel Project - Reduction of Truck Emissions at Port Facilities Grant Program project award.
4. PI# 0020351, I-16 FROM W GWINNETT STREET TO CHATHAM PKWY – NEVI Charging Station.



Draft Highway Projects

Longer-Term Projects

[Carried over from the 2045 MTP]

1. I-95 at SR 21 / Augusta Rd Interchange Reconstruction
2. President Street Grade Separation from East Broad Street to Dulany Avenue
3. I-516 / Lynes Parkway Widening from Veterans Parkway to Mildred St
4. I-516 / Lynes Parkway at I-16 Interchange Reconstruction
5. I-516 / Lynes Parkway Widening from CR 975/Veterans Pkwy to I-16
6. PI# 0015528, I-16 Widening from CS 565/Pooler Pkwy to I-95
7. Old River Road Widening from SR 204 to I-16



Draft Highway Projects

Longer-Term Projects

[Newly-identified projects]

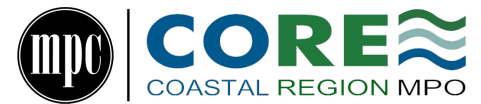
8. SR 21 Widening from SR 30 in Chatham County to McCall Road in Effingham County
9. SR 21 Widening from McCall Road to 9th Street in Rincon
10. SR 204/Fort Argyle Rd Widening 2 to 4 lanes from I-95 to John Carter Road/Old River Road
11. US 80 Widening from Bryan/Effingham County Line to SR 17 in Effingham County
12. SR 307 Grade Rail Separation and Operational Improvements at SR 21
13. SR 307 Grade Separation at Norfolk Southern Crossing #855067U
14. Belfast Keller Widening from I-95 to Great Ogeechee Parkway



Draft Highway Projects

Set Aside Policies

1. Maintenance
2. Operational Improvements
3. Transit
4. Non-Motorized Improvements (Bike/Ped/Trail)



Draft Highway Projects

2050 MTP Cost Feasible Transit Capital Improvements

Project Description	FY 2025 - 2032 (Cost Band One)	FY 2033 - 2041 (Cost Band Two)	FY 2042 - 2050 (Cost Band Three)
Transit ITS (TIP)	\$120,000		
Preventative Maintenance (TIP)	\$4,320,000	\$11,591,964	\$14,778,161
Facility Enhancements and Rehabilitation (TIP)	\$729,801	\$0	
Vehicle Replacement/Purchase (TIP)	\$19,195,008	\$0	
Ferry Boat Rehab, Purchase and Construction (TIP)	\$8,436,683	\$0	
Paratransit Maintenance Facility (TIP)	\$8,508,472	\$1,501,000	\$1,501,000
Bus Stop Improvement Program (TIP)	\$500,000	\$0	
Vehicle Replacement/Expansion - Fixed Route	\$13,078,953	\$31,421,500	\$32,810,100
Vehicle Replacement - Paratransit	\$1,664,700	\$7,625,400	\$13,000,000
Intelligent Transit System (ITS)	\$1,202,450	\$3,699,300	\$4,500,000
Upgraded Farebox and Payment System	\$1,503,750	\$7,772,200	\$3,000,000
Electric Vehicle Infrastructure	\$2,813,340	\$2,145,500	\$8,700,000
Passenger Amenities	\$6,061,250	\$6,496,900	\$6,800,000
Facility Improvement Project - ITC	\$1,503,750	\$1,501,000	\$1,501,000
Facility Improvement Project - Gwinnett	\$1,503,750	\$1,501,000	\$1,501,000
Vanpool Capital	\$1,202,400	\$2,145,500	\$2,350,000
Park & Ride Capital	\$0	\$8,317,000	\$12,000,000
Facility Construction - Ferry Maintenance Facility	\$1,302,875	\$0	
Facility Construction - Ferry Dock	\$3,520,800	\$0	
Ferry Boat Construction	\$6,061,250	\$0	
Total Transit Project Costs	\$83,229,232	\$85,718,264	\$102,441,261
Total Transit Revenues	\$83,229,232	\$85,718,264	\$102,441,261
Balance	\$0	\$0	\$0

Red Text: Projects from the adopted FY 2024 – 2027 Transportation Improvement Program (TIP)

Black Text: Longer-term transit capital improvements



Draft Transit Projects

We cannot do this without you!



Take the surveys – open until 8/7/2022

2050 MTP Survey <https://www.surveymonkey.com/r/KZ8B3LF>

2050 MTP Map Survey <https://transcommentmap.thempc.org/>

Follow us on social media

- **Facebook: CORE MPO**
- **Instagram: @coastalregionmpo**

Attend public meetings

Send us your comments on the Draft Plan via email, website, text message

Visit our website to get updates

- <https://www.thempc.org/Core/Mtp2050>



CORE
COASTAL REGION MPO

**Contact us for
more
information**

Melanie Wilson

Executive Director & CEO

wilsonm@thempc.org

912-651-1440

Wykoda Wang

Director of Transportation Administration

wangw@thempc.org

912-651-1466

Moving Forward Together 2050

<https://www.thempc.org/Core/Mtp2050>

Email

mtp2050@thempc.org

